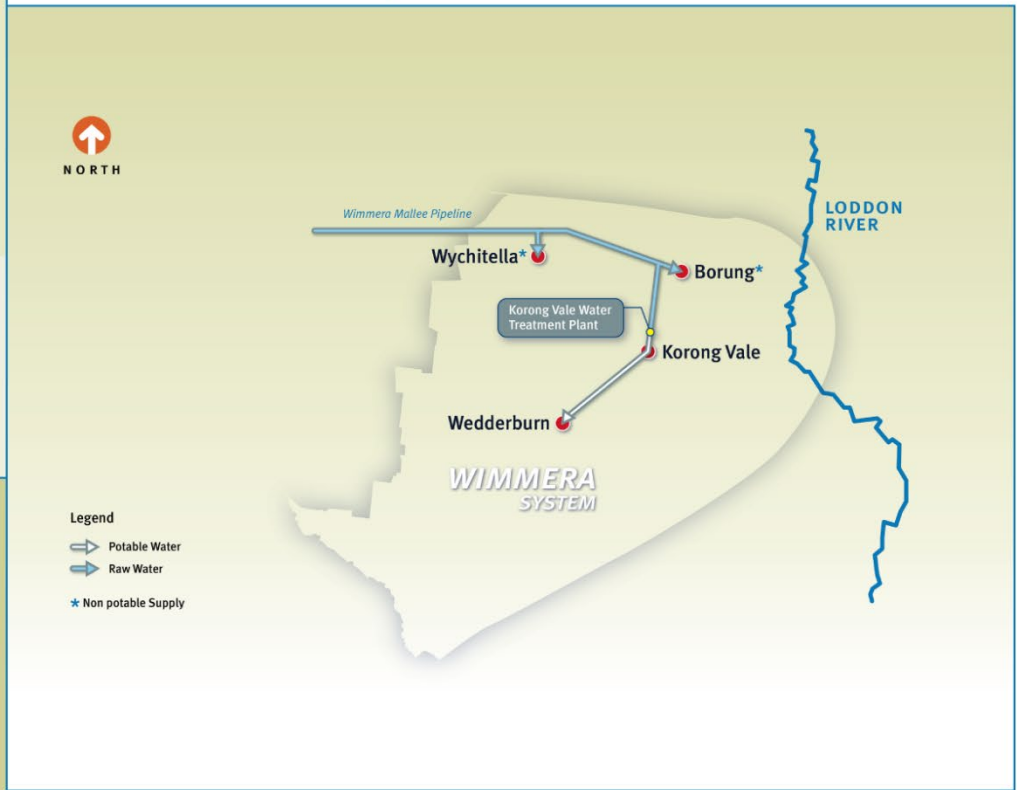
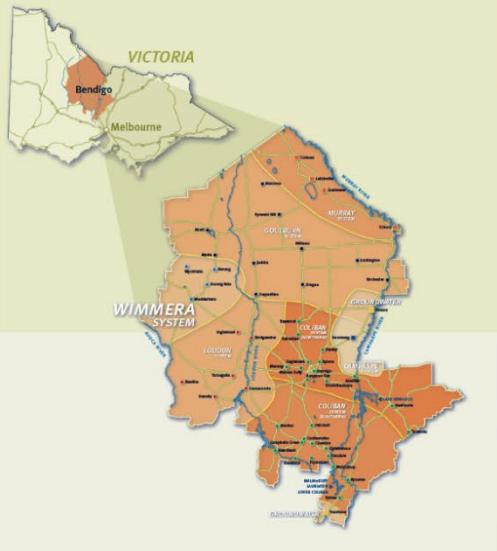


Wimmera System

March 2019



The Wimmera System supplies the towns of Borung, Korong Vale, Wedderburn and Wychitella.

Raw water is supplied by the Wimmera Mallee Pipeline.

Grampians-Wimmera Mallee Water manages the raw water supply.

Water Summaries are prepared each month to provide current water resource information.

Our Urban Water Strategy outlines our water supply initiatives to meet our region's residential, business and community water needs for the next 50 years.

Our nine supply systems have independent sources of water and supply constraints.

Please ensure you read the update relevant to your town.

To ensure we are providing information that is relevant and useful, send your suggestions and feedback to our postal address:

37- 45 Bridge Street,
Bendigo 3550 or e-mail to:
communications@coliban.com.au

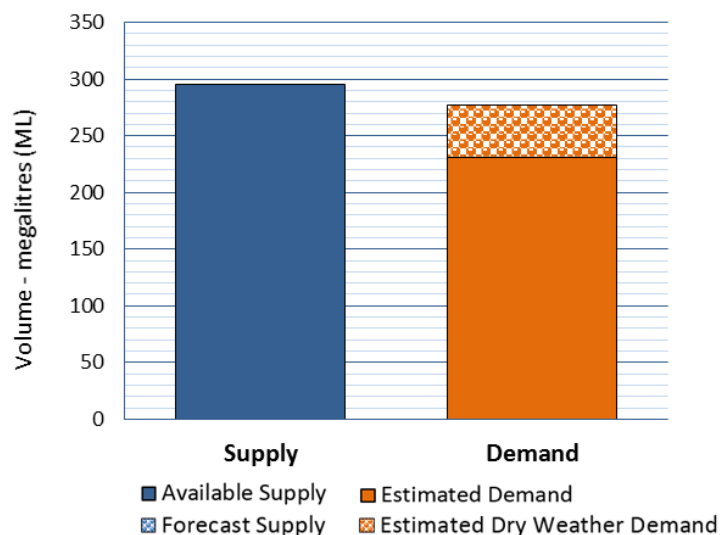
Available raw water supply

Carryover last year	Allocation to date	Spillable water ¹	Usage to date	Total Available (Megalitres)
333 ML	165 ML	0 ML	203 ML	295 ML

¹ Water spilt and held in the spillable water account.

The graph below shows the raw water 12 month supply and demand outlook for the Wimmera System.

**12 month supply and demand outlook
Wimmera System**



Further system information

> **Bulk entitlement volume**
- 300 ML

> **Allocation volume**
- 55% - 165 ML

Allocations under the Wimmera Bulk Entitlement are based on storage levels and the available water calculation.

> **Allocation purchase**
None proposed for 2018-19.

> **Spillable Water Account**

Restrictions apply to the holding of allocation in excess of 100% of the entitlement volume.

The external Resource Manager (Grampians-Wimmera Mallee Water) may allow this water to be held in a 'spillable water account' until such time as it is either spilt, or credited to an allocation account.

Low risk of spill was declared on 4 July 2018

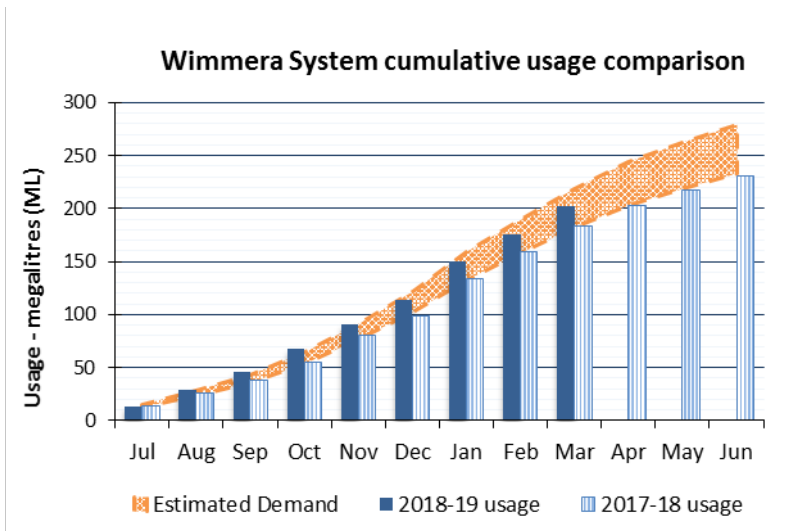
> **Water restriction outlook**

Permanent Water Saving Rules (PWSR) currently apply.

The restriction levels are based on seasonal allocations and are reviewed monthly.

Demand comparison

The graph below shows 2018-19 cumulative water usage for the Wimmera System compared with the same period last year and estimated demand.



Monthly usage by towns

The graphs below show this month's water usage for the Wimmera System and each town supplied by this system, compared with the same period last year.

