

# Our prices are changing from 1 July 2025



## What's changing?

4.0% water volume  
4.7% water and sewer access charges

Average increase across most water and sewer prices.  
Made up of a 2.5% price adjustment endorsed by the Essential Services Commission, plus inflation.  
This year's increase is between 1.5% and 2.2% less than last year.

\$1.34

Average weekly increase for residential owner-occupied households (or \$1,631.80 per year).  
This figure was \$1.74 last year.

38 cents

Average weekly increase for renters (or \$517.98 per year).  
Renters pay only usage, and no access charges.

## Understanding your bill

The final amount of your water bill is made up of two sets of charges:

**Fixed water and sewerage service fees**

These are the same in every bill.

**Variable usage charges**

These are based on how much water you use.



## Average annual bill by customer type

	Average consumption (kilolitres per year)	Last year (2024/25)	This year (2025/26)
Owner-occupied home	190	\$1,562.15	\$1,631.80
Renter	190	\$498.18	\$517.98
Small Business	100	\$1,326.17	\$1,386.44
Medium business	900	\$4,186.03	\$4,365.37
Large business/Industrial	10,000	\$44,206.81	\$46,091.49
Rural (modernised)	5,000	\$3,192.00	\$3,259.00
Rural (unmodernised)	3,000	\$1,934.00	\$1,975.00

## Meeting your expectations

Every day we engage with our customers through a range of informal and formal channels that help us understand your expectations of us. These 'must-haves' identified by our customers are reflected in our pricing plan, guide our service delivery and performance, and are measured through our Annual Customer Forums.

Our customers have told us they want:

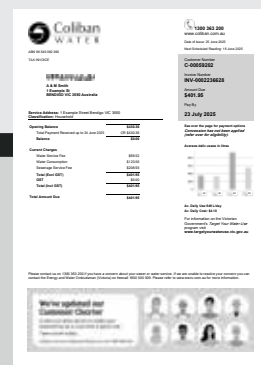
High quality water they can trust

Services that meet their needs now and into the future

Support for customers in need

Support economic growth and prosperity of our region

Reduced environmental footprint and a socially responsible, sustainable business for future generations



## How we spend your money

Coliban Water is a 100% customer-funded business, and every customer contributes to our operations through their water bills. We then use this money prudently to maintain and upgrade vital community water and sewer assets.

**\$45.13**

### Treatment (water and sewer)

19 water treatment and 16 water reclamation plants are managed to deliver top-quality drinking water and to ensure recycled water and trade waste is made safe for reuse on parks and gardens, to provide flows to inland rivers, and as biosolids in farming in accordance with our EPA Licence.

**\$13.28**

### Technology and corporate

Includes technology to help monitor our networks, labour costs, office rental, electricity and overheads.

**\$5.12**

### Customer service and billing

Our customer support functions, staff, and metering and billing systems.



**\$4.74**

### Environment contribution

In addition to our stewardship of the environment through our every day working practices, we contribute to the state government fund to support high priority environmental projects across Victoria.

Covers the maintenance, repair and replacement of more than 2,410 kilometres of water mains and 2,120 kilometres of sewer mains.

**\$29.19**

### Operations and networks

Maintenance of three major reservoirs near Kyneton that supply water to Kyneton, Castlemaine, Bendigo and rural customers, our water entitlement to the Murray and Goulburn systems, and 18% share of volume in Lake Eppalock.

**\$2.54**

### Headworks and water supply

## What we're delivering

Just like our homes and cars, our water infrastructure requires regular investment and renewal to ensure it can continue to cater for our growing population and be more resilient to the impacts of climate change. During 2024/25 we delivered \$80 million in capital projects, and during 2025/26 will deliver projects including:

Bendigo	Water reclamation plant (solids handling facility upgrade)
Bendigo	Water treatment plant upgrades (ultraviolet system)
Bridgewater	Water treatment plant (new pump station and storage tanks)
Castlemaine	Rehabilitation the Kalimna Basin
Castlemaine	Water reclamation plant upgrades
Cohuna	Water treatment plant works (clarifier refurbishment)
Echuca	Water tower refurbishment
Goornong	New 15 kilometre water main from Huntly to Goornong
Guildford	Water tank recommissioning and booster pump station upgrade
Maiden Gully	New water pipeline from Golden Square to Marong
Marong	Sewer network upgrade (mains, pump stations)
Region-wide	Water and Sewer Main Renewal Program
Rural	Coliban Main Channel renewals and maintenance

Explore our projects at [connect.coliban.com.au](https://connect.coliban.com.au)