

Pressure Sewer Systems

Important information for builders

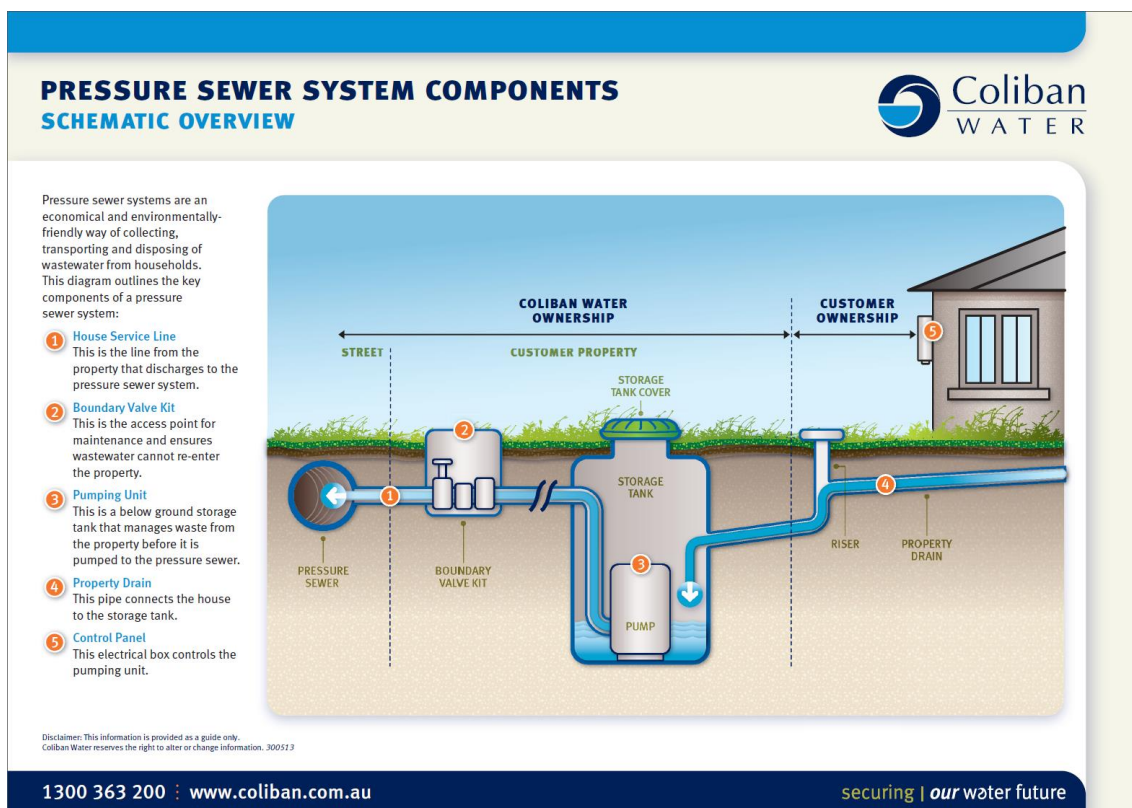
April 2021

These systems comprise a fully sealed pipe network fed by pumping units located at each connected property. Pressure sewer systems are an alternative when traditional gravity sewer connection is not feasible for a particular lot or development area.

From 1 April 2021 Coliban Water imposed requirements on developers to pay a higher New Customer Contribution (NCC) for each lot to be connected by pressure sewer.

This NCC provides developer funding held by Coliban Water for the supply, installation and ongoing maintenance requirements by Coliban Water for the property assets on each lot including tank, pump and control box. The supply and installation will be completed by Coliban Water's approved contractors after an application to connect is received.

Some previously approved pressure sewer systems will extend beyond this date with the property owner responsible for supply, installation and ongoing maintenance costs. Coliban Water will confirm details related to your application during our consent to connect process.



- Builders must have permission to act on behalf of the customer and ensure the property owners details are supplied as part of an application to connect. Online applications are accessible via the Coliban Water website.
- Sewer depth is 1,100mm from the finished surface level at the pressure sewer system tank location.
- The pressure sewer tank system is required to be located in the front yard of the property. The lid must remain uncovered. No landscaping works are allowed over the tank.
- The builder is responsible for confirming sewer connection depths prior to any site excavation.

- The builders' electrician must provide a circuit breaker within the household electrical switchboard.
- The electrician must also install a power cable to an isolation switch next to the proposed control panel location. Cable must also be installed from the proposed control box location to the internal wall mount alarm switch. Our contractor will confirm appropriate cable type. This alarm location should be confirmed with the customer however it is typical to locate these in the laundry.
- The control box location must be at the front of the house and remain accessible to Coliban Water at all times.
- Coliban Water will forward application details to our approved contractor.
- Coliban Water's contractor will make contact to obtain site plans and electrical diagrams to confirm electrical requirements have been satisfied. They will provide contact details and confirm installation date and time as well as commissioning of the system.
- Builders are responsible for any damage to the pressure sewer system during construction works. Coliban Water's contractor will repair the asset at the builders' expense.
- The tank lid should be protected at all times. Heavy items are not allowed to be placed on or driven over this asset. Barrier protection is necessary during construction to ensure damage is avoided.
- The builder is required to work with Coliban Water's approved contractor to organise the installation of the tank, pump system, control box, internal alarm and electrical connection.
- Work to connect the property service drain must be performed by a licenced plumber in accordance with AS3500. Please ensure the plumber receives a copy of the pressure sewer information sheet provided and accessible via the Coliban Water website.
- Damage to the system must be reported to Coliban Water on 1300 360 200.



Disclaimer: Information contained in this document was correct at the time of publication April 2021. Coliban Water reserves the right to alter information at any time. © 2021 Coliban Water.

